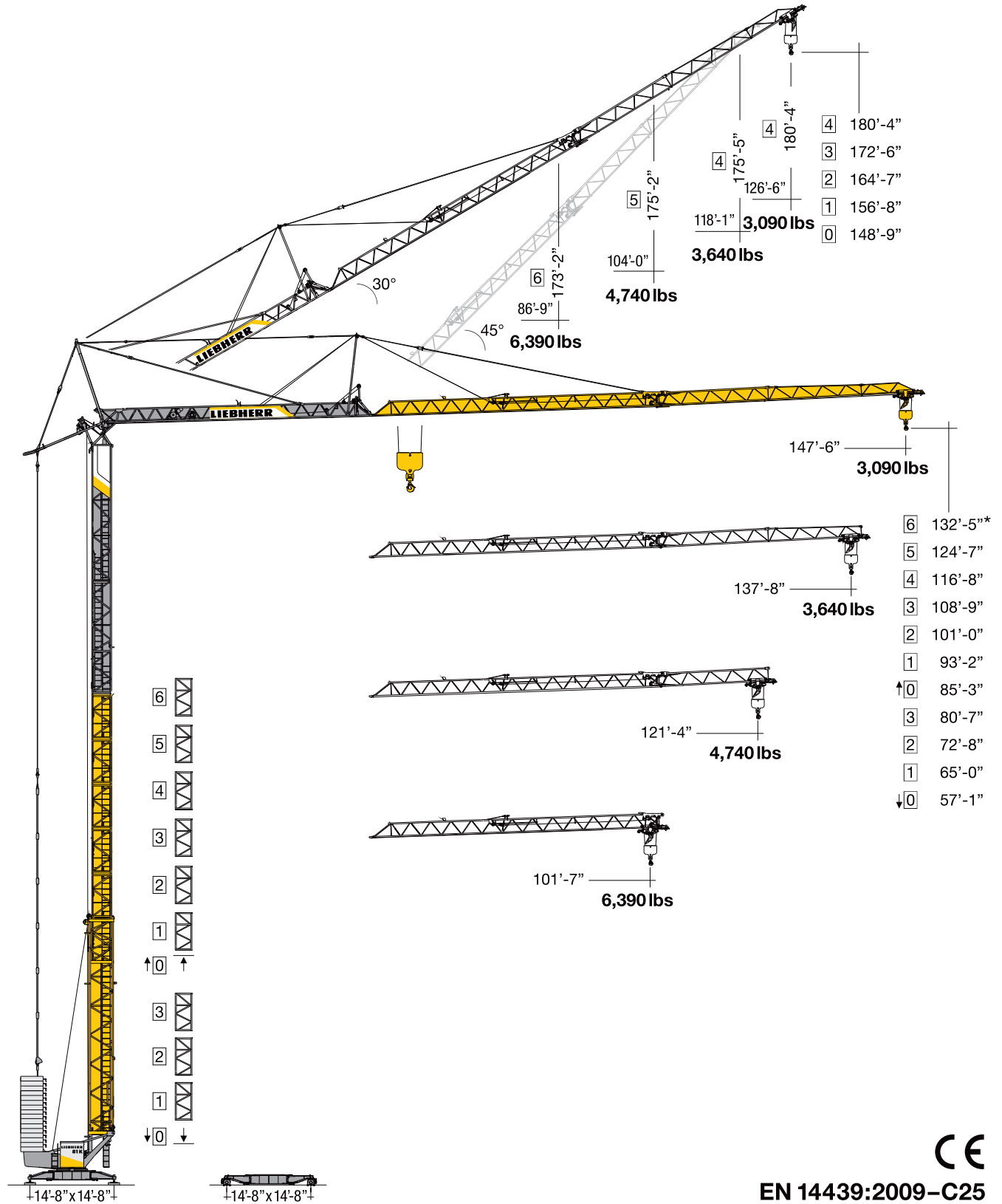


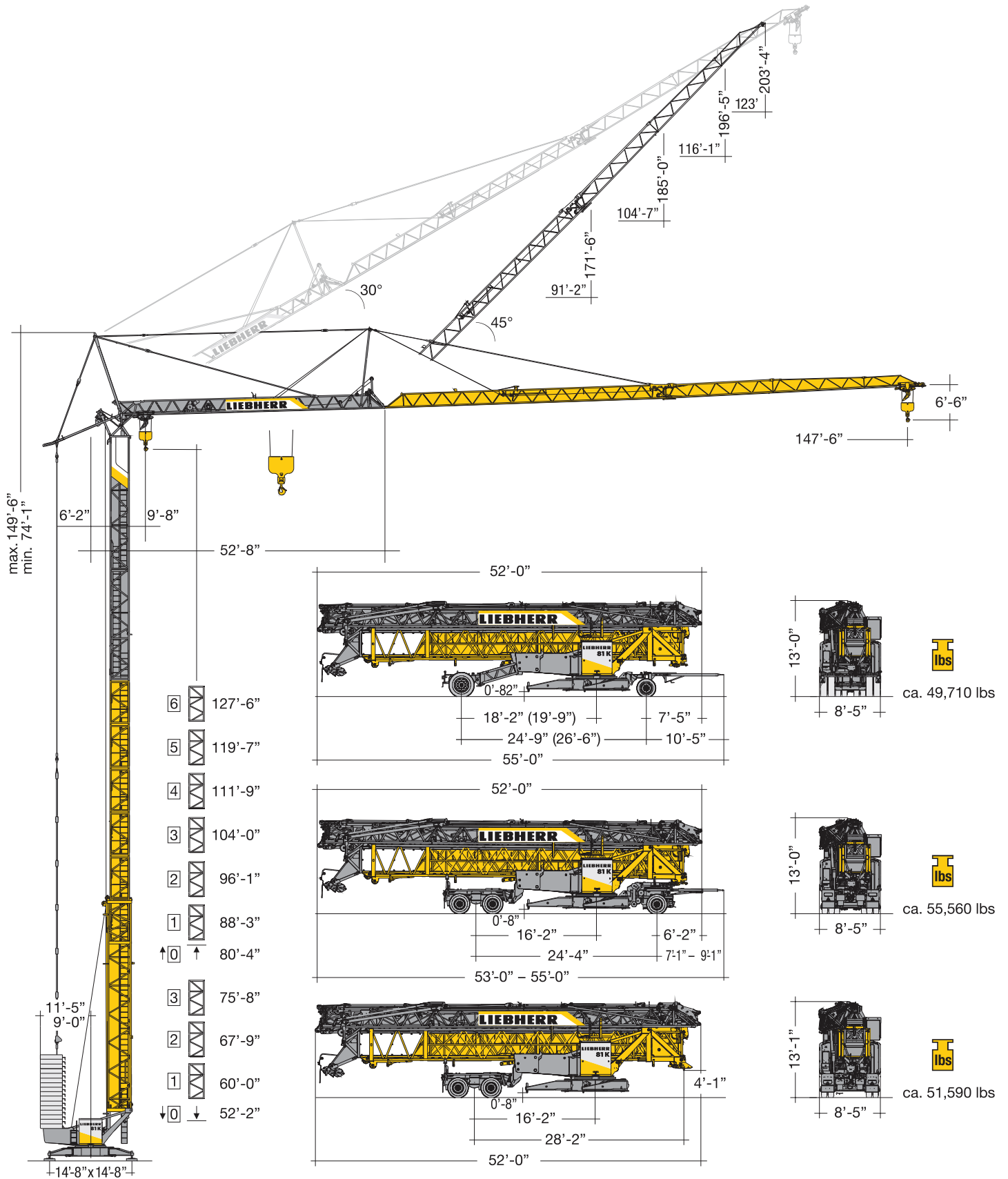
# Tower Crane 81K

Turmdrehkran / Grue à tour / Gru a torre / Grúa torre  
Guindaste de torre / Башенный поворотный кран

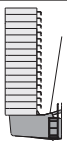


EN 14439:2009-C25

# LIEBHERR



## Weight Gewicht / Poids / Peso / Peso / Pesos / Macca



r = 11'-5" 77,160 lbs  
r = 9'-0" 88,190 lbs





44,090 lbs

\* see instruction manual. / siehe Betriebsanleitung. / voir manuel de service. / vedi manuale d'istruzione. / ver manual de instrucción. / ver manual de instruções. / см. инструкцию по эксплуатации.

# Radius and capacity





Ausladung und Tragfähigkeit / Portée et charge / Sbraccio e portata  
Alcances y cargas / Alcance e capacidade de carga / Вылет и грузоподъемность

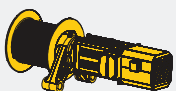

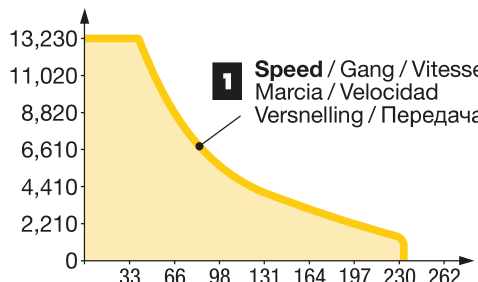
ft	ft/lbs 	ft/lbs															
		42'7"	49'2"	59'1"	68'9"	78'7"	88'6"	95'1"	101'7"	108'3"	114'8"	121'4"	128'0"	134'5"	137'8"	144'4"	147'6"
99'-2"	9'-8" – 43'-6" 13,230	13,230	11,510	9,330	7,800	6,680	5,820	5,340	4,920	4,560	4,230	3,970	3,700	3,480	3,370	3,180	3,090
92'-6"	9'-8" – 46'-3" 13,230	13,230	12,280	9,970	8,360	7,140	6,220	5,710	5,290	4,850	4,560	4,260	3,990	3,750	3,640		
81'-6"	9'-8" – 49'-5" 13,230	13,230	13,230	10,870	9,150	7,850	6,860	6,330	5,840	5,420	5,070	4,740					
68'-3"	9'-8" – 53'-5" 13,230	13,230	13,230	11,840	9,970	8,580	7,500	6,900	6,390								


ft	ft/lbs 	Elevated jib 30° / Auslegersteilstellung 30° / Flèche inclinée 30° / Braccio inclinato a 30° Pluma inclinada 30° / Lança inclinada 30° / Положение стрелы под углом 30°															
		39'4"	45'9"	52'5"	59'1"	65'6"	72'2"	82'0"	86'9"	91'9"	98'4"	104'0"	108'3"	114'8"	118'1"	141'4"	126'6"
147'-6"	9'-8" – 55'-1" 6,660	6,610	6,610	6,550	6,020	5,560	5,160	4,630	4,410	4,190	3,950	3,750	3,620	3,420	3,310	3,220	3,090
137'-8"	9'-8" – 58'-1" 6,660	6,610	6,610	6,610	6,530	6,040	5,600	5,050	4,810	4,590	4,320	4,100	3,950	3,750	3,640		
121'-4"	9'-8" – 69'-6" 6,660	6,610	6,610	6,610	6,610	6,610	6,420	5,800	5,530	5,290	4,980	4,740					
101'-7"	9'-8" – 69'-6" 6,660	6,610	6,610	6,610	6,610	6,610	6,610	6,610	6,610	6,610	6,610	6,390					


# Driving units

Antriebe / Mécanismes d'entraînement / Meccanismi / Mecanismos / Mecanismos / Приводы

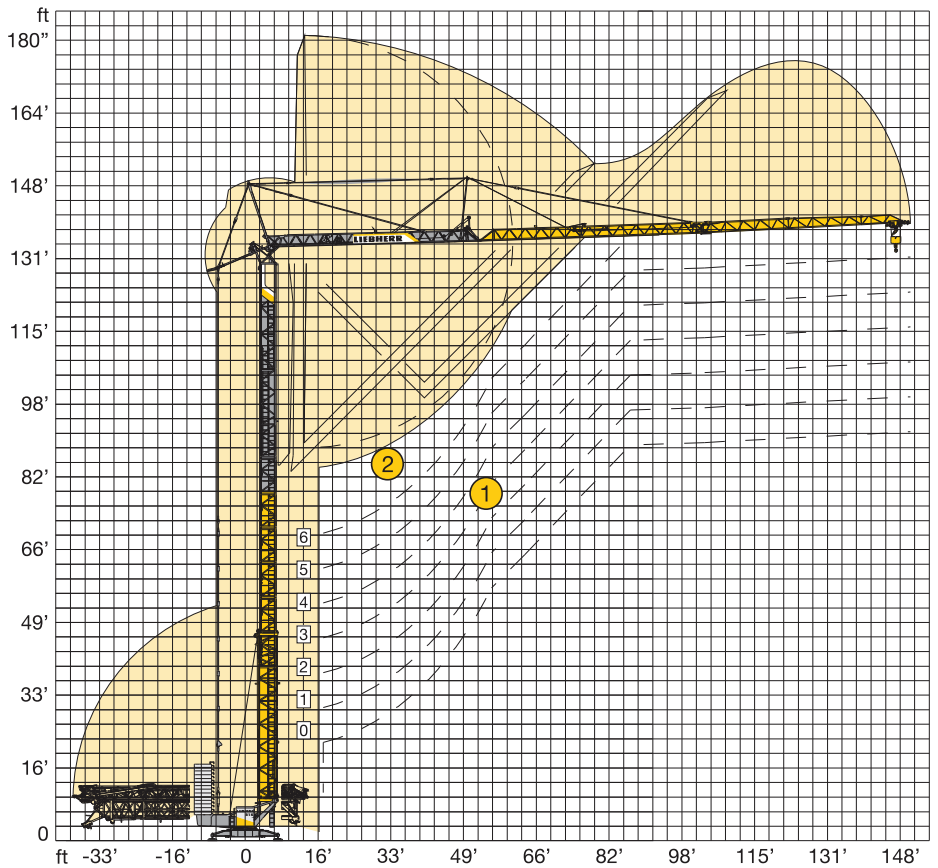
	U/min. 0 ↔ 0,8 sl./min tr./min	6.7 hp FU
	0 ↔ 197 ft/min	4 hp FU
	0 ↔ 82 ft/min	2 x 3 hp FU
	0 – 45°, 110 sec.	4 hp FU

	↔ <b>stepless</b> / stufenlos / régl. continu régl. progressive / sin escalones sem degraus / бесступенчатый
20.1 hp FU WIW 210 MZ 404	lbs ft/min
	<b>Speed</b> Gang Vitesse Marcia Velocidad Velocidade Передача
	<b>1</b> 13,230 0 ↔ 39 880 0 ↔ 230
 <p><b>1</b> Speed / Gang / Vitesse Marcia / Velocidad Velocidade / Передача</p>	

BGL 	C.0.08.0080
---	-------------

	380 – 500 V	Hz	kVA
285'4"	4.3 x 6.5 qf	50/60	21,0 FU

- Standard erecting curves from 0 to 6 tower sections** / Standard Aufstellkurven von 0 bis 6 Turmstücken / Courbes de montage standard de 0 à 6 éléments de mât / Curve di montaggio standard con 0 fino a 6 elementi torre / Curvas de montaje estándar (0-6 tramos de torre) / Curvas padrão de montagem de 0 até 6 segmentos de torre / Стандартная монтажная высота с 0-6 башенными секциями
- Elevated erecting curve (+14'-8" ft) using the example of 6 tower sections** / Erhöhte Aufstellkurve (+4,5 m) am Beispiel von 6 Turmstücken / Courbe de montage élevée (+4,5 m) en prenant pour exemple 6 éléments de mât / Elevata curva di montaggio (+4,5 m), come per esempio con 6 elementi di torre / Curva de montaje elevada (+4,5 m): ejemplo con 6 tramos / Curva elevada de montagem (+4,5 m) como exemplo para 6 segmentos de torre / Увеличенная монтажная высота (+4,5 м) на примере 6-ти башенных секций



## Packing List

Kolli-Liste / Liste de colisage / Lista dei colli  
 Lista de contenido / Lista de embalagem / Упаковочный лист

Item	Qty.				L (ft)	B (ft)	H (ft)	lbs
Pos. Anz. Rep. Qte. Voçe Qta. Pos. Cant. Ref. Cant. Поз. Кол-во		<b>Tower section (without/with tower support*)</b> / Turmstück (ohne/mit Turmauflage*) / Élément de mât (sans/avec support de mât*) / Elemento di torre (senza/con pedana di servizio*)						
1	4	Tramo de torre (sin/con soporte de torre*) / Tramo de torre (sem/com suporte de torre*) / Башенная секция (без/с опорными выступами*)			8'-2"	3'-6"	3'-6"	1,102
2	2*				8'-2"	3'-6"	3'-6"	1,323*
3	1	<b>Jib extension 107'-7" – 121'-4" ft</b> / Ausleger-Verlängerung / Rallonge de la flèche / Elemento estensione braccio / Prolongación de pluma / Extensão da lança / Удлинение стрелы			20'-3"	2'-9"	2'-8"	705
4	1	<b>Jib extension 121'-4" – 137'-8" ft</b> / Ausleger-Verlängerung / Rallonge de la flèche / Elemento estensione braccio / Prolongación de pluma / Extensão da lança / Удлинение стрелы			17'-1"	2'-9"	2'-5"	353
5	1	<b>Jib extension 137'-8" – 147'-6" ft</b> / Ausleger-Verlängerung / Rallonge de la flèche / Elemento estensione braccio / Prolongación de pluma / Extensão da lança / Удлинение стрелы			10'-2"	2'-9"	2'-0"	176
6	1	<b>Road transport axle front</b> / Transportachse vorne / Essieux de transport avant / Asse di trasporto anteriore / Eje delantero para transporte / Eixo de transporte dianteiro / Транспортировочная ось, передняя	Tra 100 KY 6 Tra 100 KY 6 A		12'-0" – 13'-0"	4'-8"	3'-6"	2,028 2,028
7	1	<b>Road transport axle front</b> / Transportachse vorne / Essieux de transport avant / Asse di trasporto anteriore / Eje delantero para transporte / Eixo de transporte dianteiro / Транспортировочная ось, передняя	Tra 115		12'-5"	8'-2"	4'-2"	4,189
8	1	<b>Road transport axle behind</b> / Transportachse hinten / Essieux de transport arrière / Asse di trasporto posteriore / Eje trasero para transporte / Eixo de transporte traseiro / Транспортировочная ось, задняя	Tra 120 GY 1 A Tra 120 GY 1		6'-2"	8'-2"	3'-4"	2,425
9	1	<b>Road transport axle behind Tra 204</b> / Transportachse hinten / Essieux de transport arrière / Asse di trasporto posteriore / Eje trasero para transporte / Eixo de transporte traseiro / Транспортировочная ось, задняя			10'-2"	8'-2"	3'-6"	4,189
10	1	<b>Road transport axle behind Tra 203</b> / Transportachse hinten / Essieux de transport arrière / Asse di trasporto posteriore / Eje trasero para transporte / Eixo de transporte traseiro / Транспортировочная ось, задняя			9'-8"	8'-2"	3'-9"	5,512
11	1	<b>Road transport axle behind Tra 205</b> / Transportachse hinten / Essieux de transport arrière / Asse di trasporto posteriore / Eje trasero para transporte / Eixo de transporte traseiro / Транспортировочная ось, задняя			9'-8"	8'-2"	3'-9"	6,614

Subject to alterations! / Konstruktionsänderungen vorbehalten! / Sous réserves de modifications! / Riservato il diritto di modifiche strutturali!  
 ¡Sujeto a modificaciones! / Salvo modificación da construação! / Права на внесение конструкторских изменений сохраняются!

This information is supplied without liability. / Sämtliche Angaben erfolgen ohne Gewähr. / Ces renseignements sont sans garantie. / Tutte le indicazioni fornite senza garanzia. / Declinamos toda responsabilidad derivada de la información proporcionada. / Declinamos qualquer responsabilidade quanto à informação fornecida. / Все данные указаны без обязательств.